

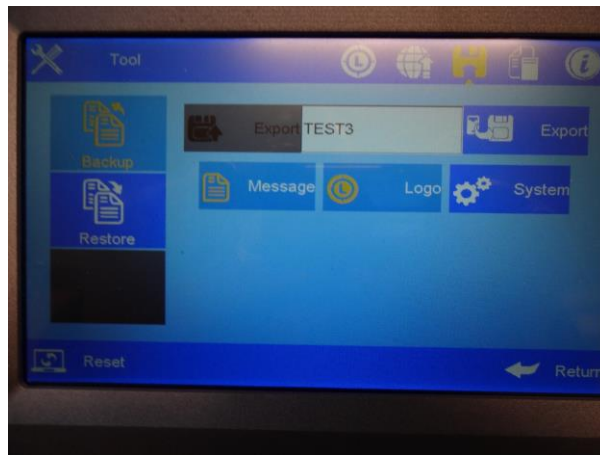


www.t-mark.co.uk

SoJet Message Back Up

The purpose of this document is to allow for central storage of messages and logos on a PC. This will allow the user to create customised back up files to be restored to the printer, thus overcoming the message and logo storage limit on the machine.

The first step is to back up all the messages and logos from the machine. This is done in the **Tools/Back Up and Restore** screen. Make sure **'Backup'**, **'Message'** and **'Logo'** are selected and are highlighted in yellow and give a name to the backup folder, in this example TEST3, and tap the export button.

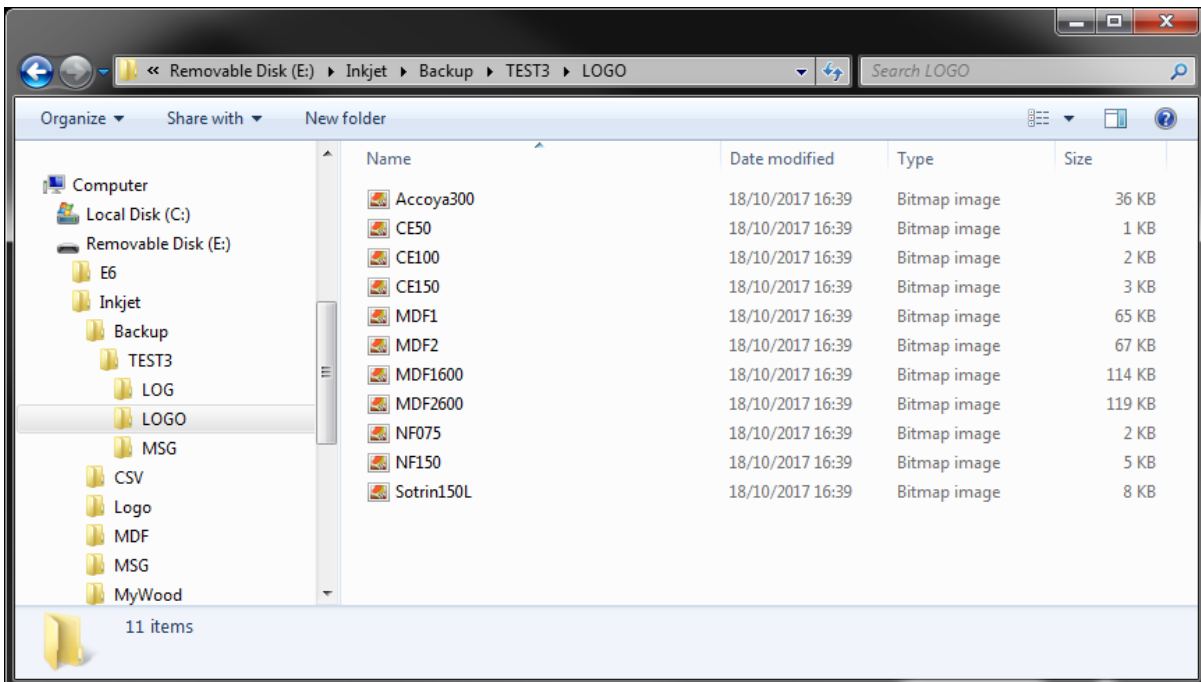
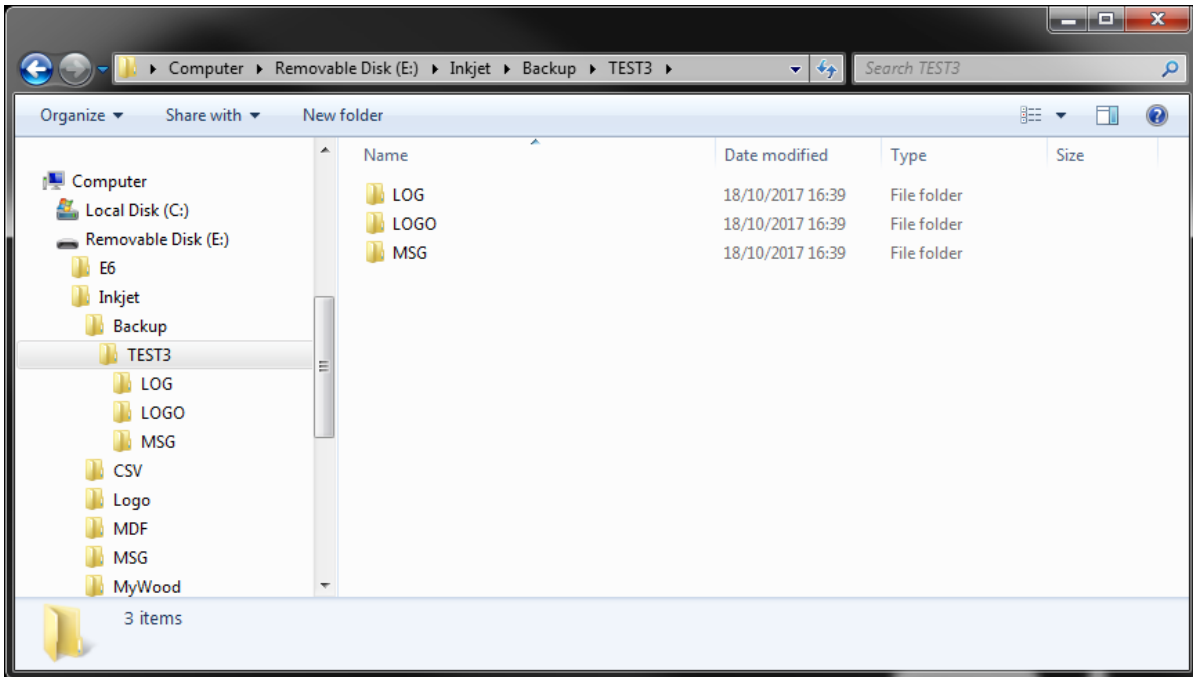


The printer will now show a progress bar and start the backup process, how long the process will take depends on the number of messages and logos that are stored on the printer. Once the backup has completed, the USB stick can be removed from the printer.

The backup folder will be created on the USB stick in **Inkjet/Backup** and the folder will contain three folders called LOG, MSG and LOGO. LOG contains a text file with the time stamp and the details of the file names transferred during the backup, LOGO contains the logos and MSG the messages

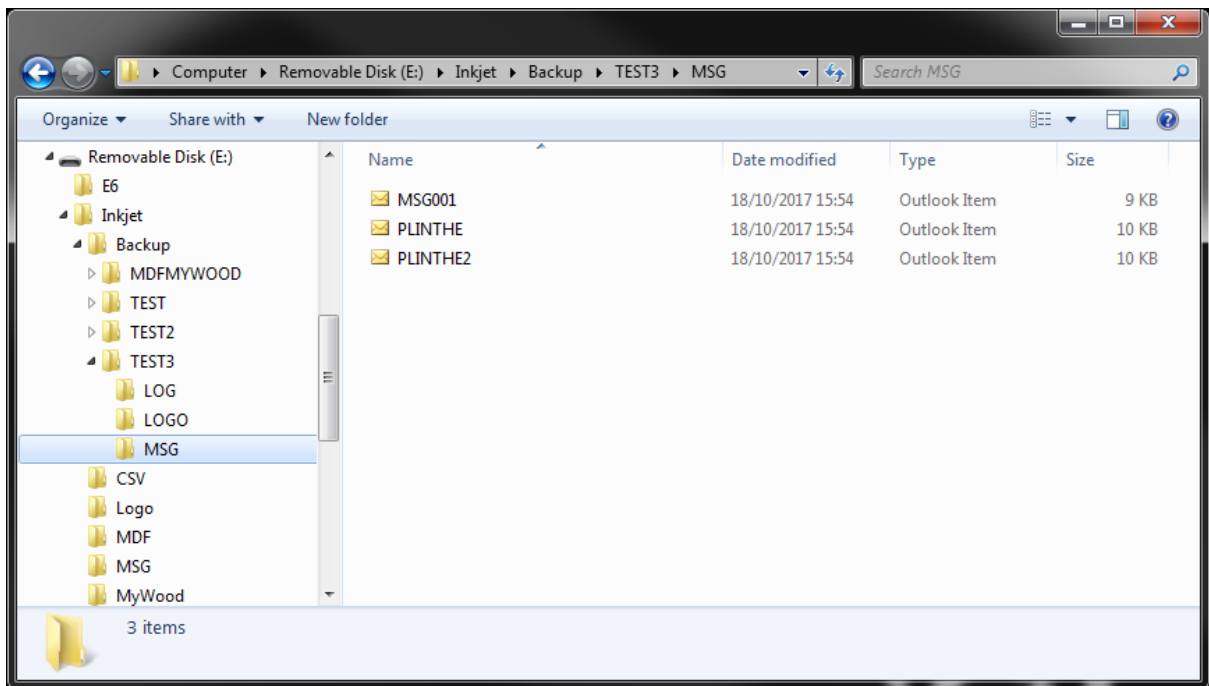


www.t-mark.co.uk





www.t-mark.co.uk



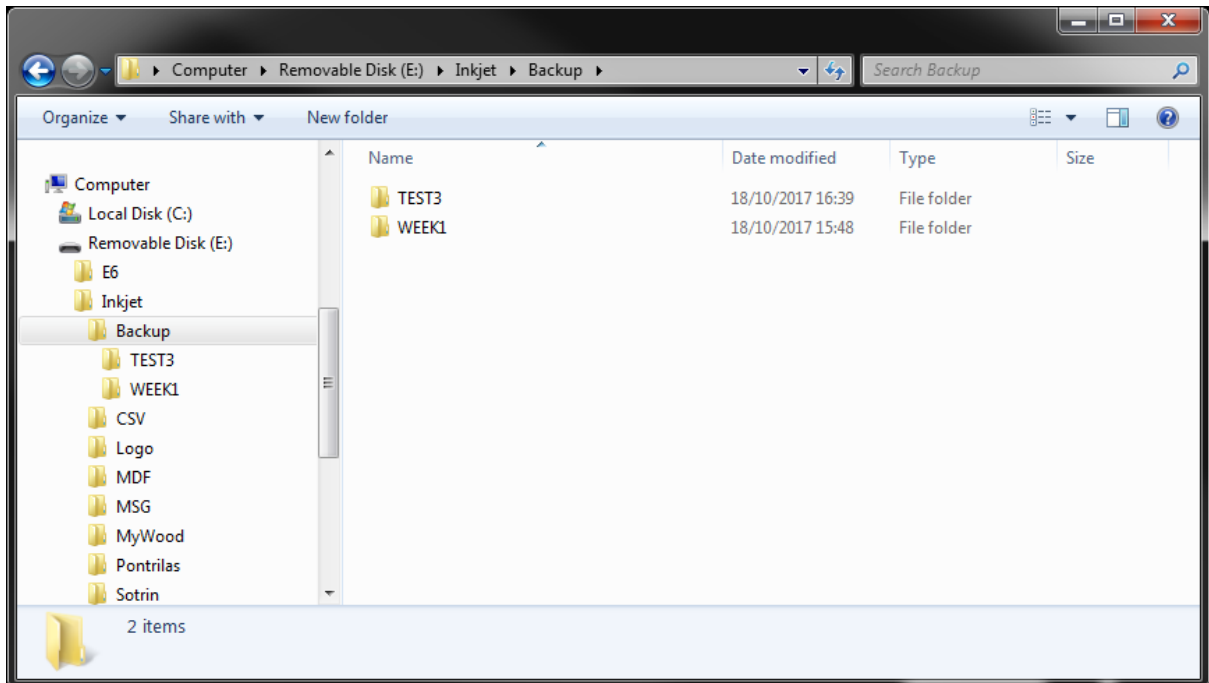
The messages and logos can now be stored on the PC in whatever folder structure desired, depending on how the restore process is going to be worked. An example would be CUSTOMERX/MSG, CUSTOMRX/LOGO; it would then be possible to pick the messages and logos and create a restore file for a week of production.



www.t-mark.co.uk

RESTORE

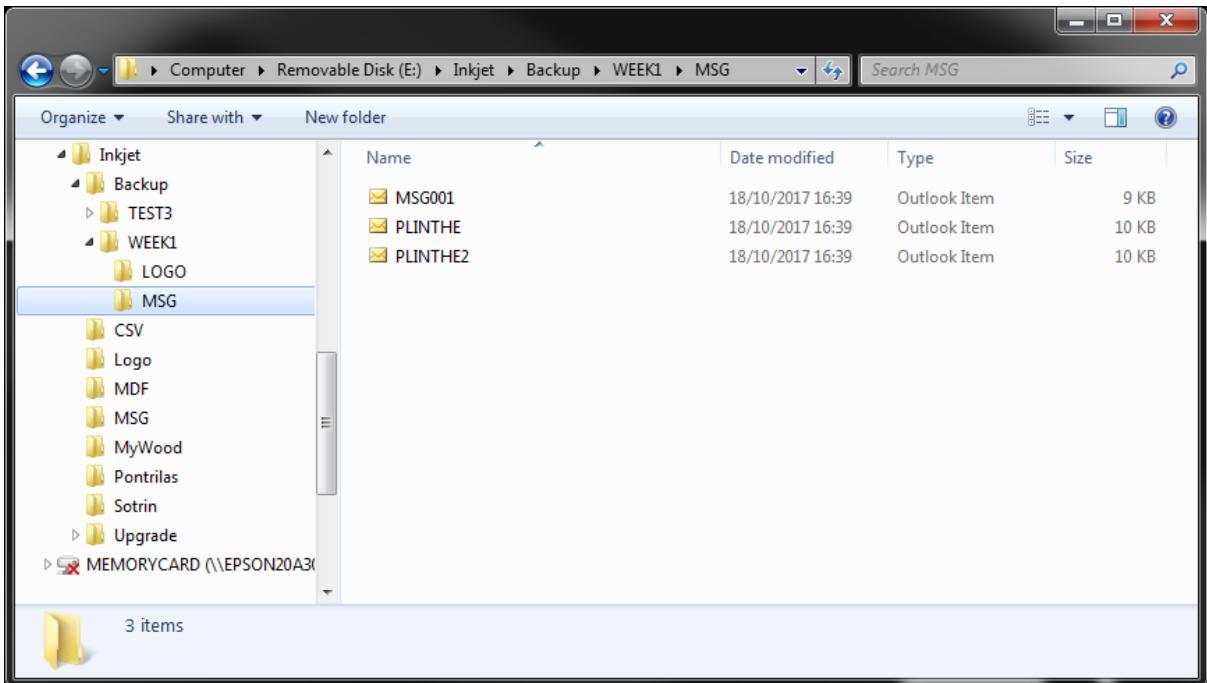
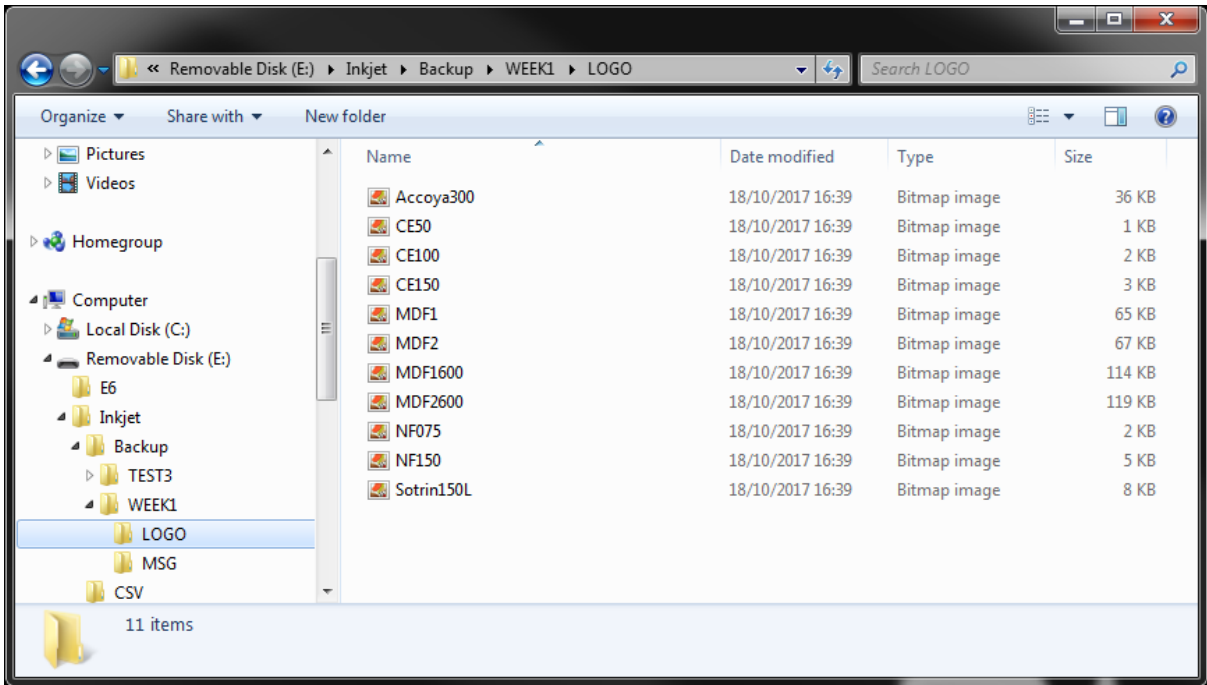
The next step is to create the restore file; to do this create a new folder in the Backup folder on the USB stick and name it as required, in this example the name WEEK1 has been used.



In the restore folder, create the MSG and LOGO folders and populate them with the desired messages and their associated logos.



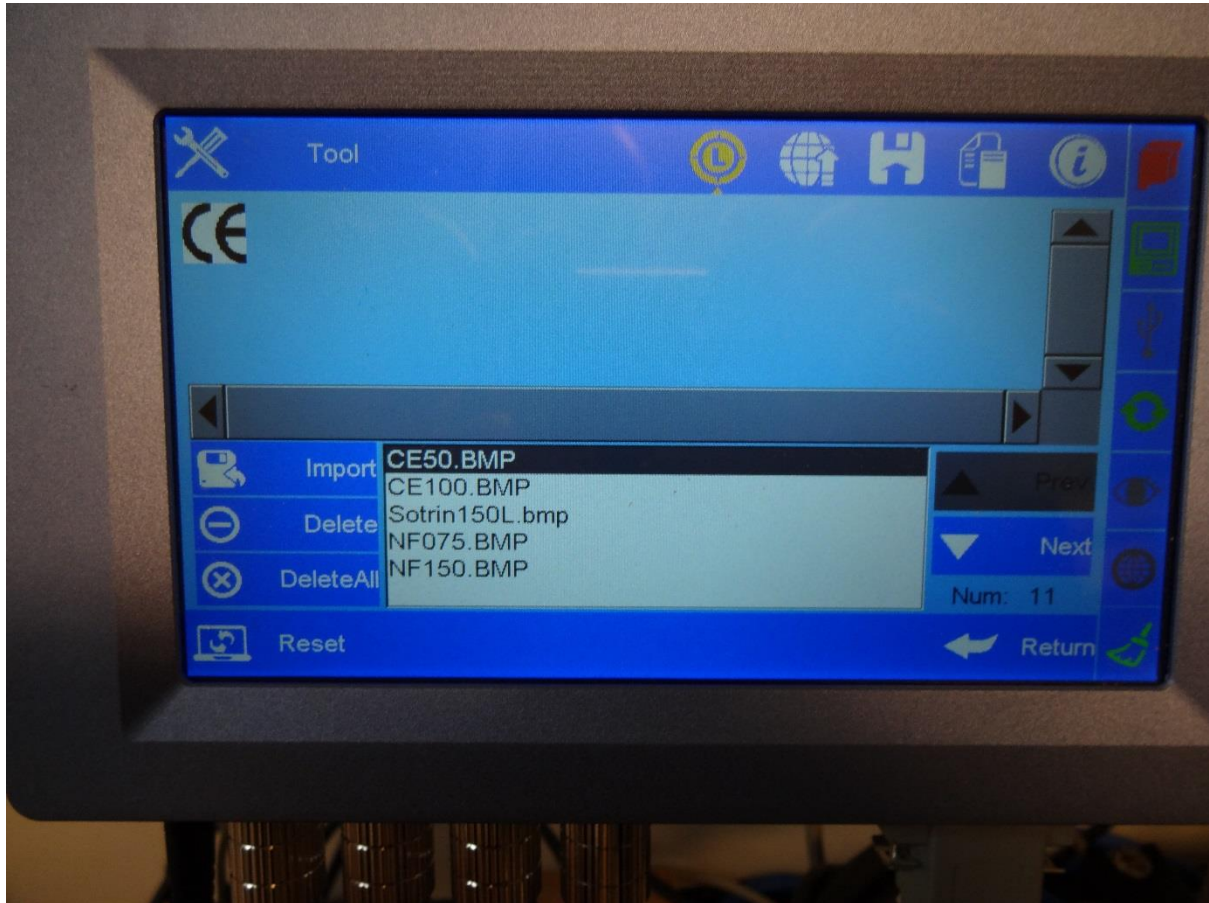
www.t-mark.co.uk



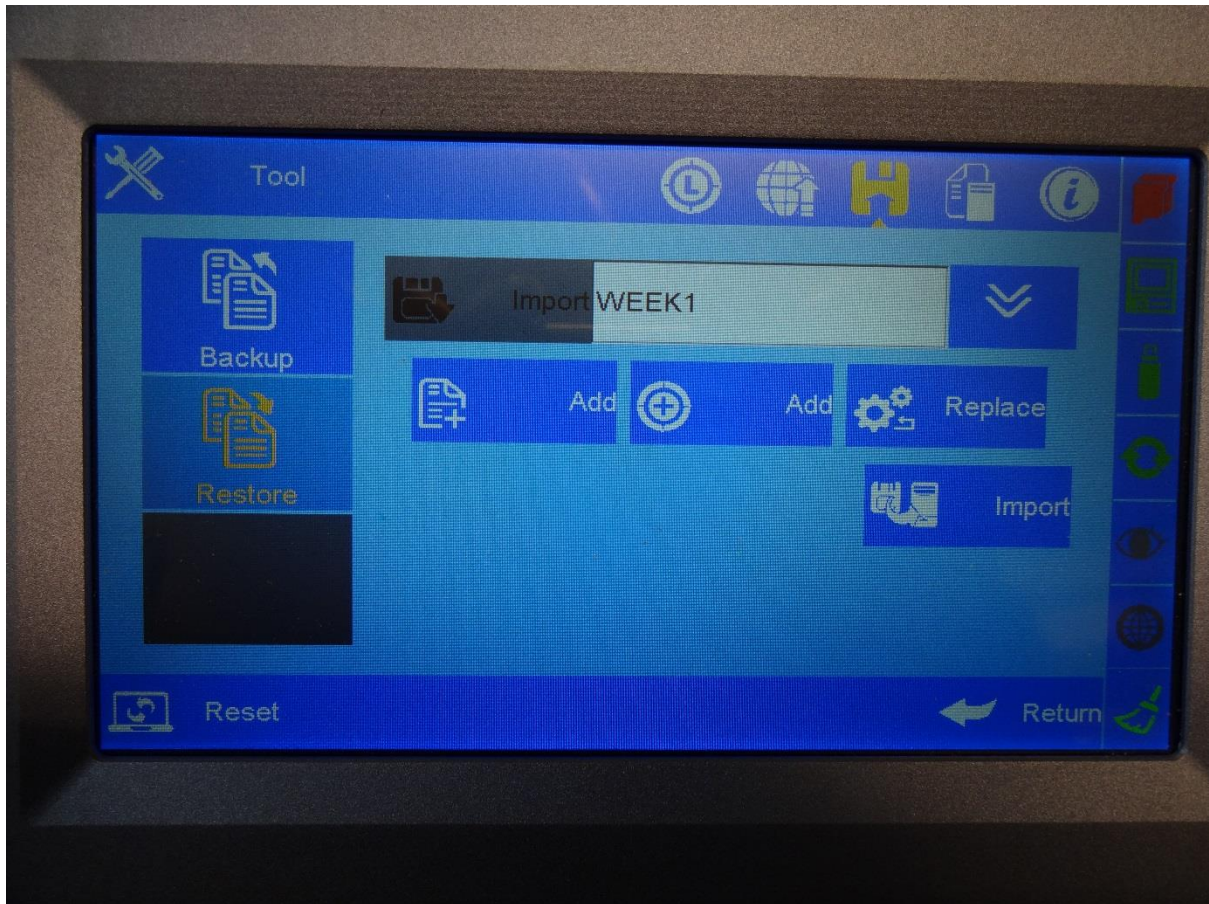


www.t-mark.co.uk

Before restoring, it is recommended that the messages and logos are deleted from the printer. The messages are deleted using **Message/DeleteAll** and the Logos using **Tools/Logo/DeleteAll**



Once the USB stick has been recognised by the printer, the restore process can be started. From the **Tools/Back Up and Restore** screen, highlight **Restore** and select the desired backup folder and, ensuring no other option is selected, tap Import. A progress bar will appear and the restore process will start, once completed the printer will reboot.



Any new messages created on the printer will need to be backed up to a new backup folder and added to the central store.