



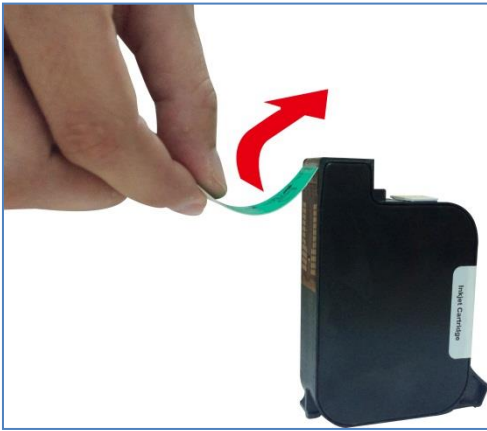
Elfin

Cartridge Maintenance



1、42ml cartridge maintenace

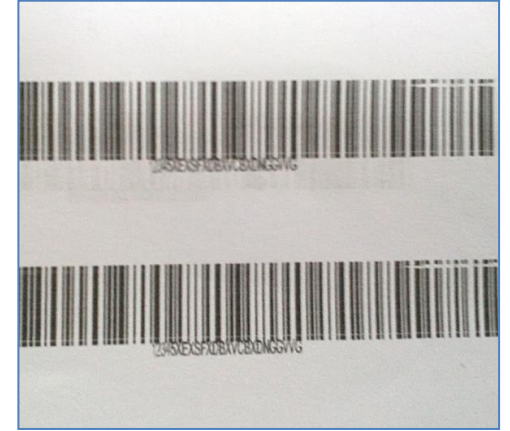
1.1 Maintenance needed in these situations:



1. When opening the cartridge



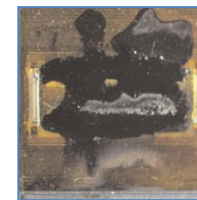
2. Missing when spray printing



3. Bubbles when spray printing



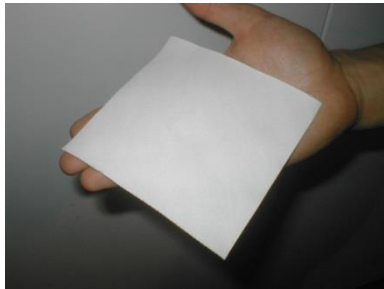
4. Not open the pre-purge Mode



5. Some dust on the printhead or the printing environment have much dust

1.2 Cartridge maintenance

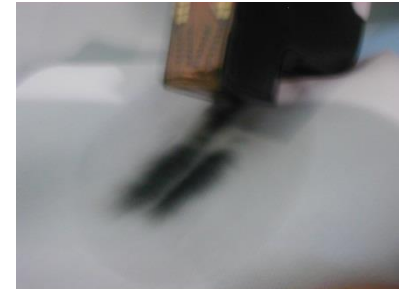
一、 Use a lint-free cloth to clean the nozzles



1. Lay the cloth flat



2. Put the nozzle down, and clean slowly in the direction of the nozzles.



3. The effect after the clean

If still meet the printing problem after finish above process, please do follow steps:

二、Clean Printhead

Click  on system management interface to enter printing option setting.



Setting



Print Option



Nozzle Maintenance



Clear printhead

Pre-Purge setting



Setting



Print Option



Nozzle Maintenance



Pre=Purge

2、370ml cartridge maintenance

2.1 370ml cartridge care



Attention:

1. When not in use, the cartridge should be tied up with the ink bag, and laid in a horizontal position, on the top of the ink container. Make sure the tubes aren't kinked.
2. The tray should be about 50mm lower than the height of the nozzle;
3. If the ink bag is higher than the cartridge, ink will leak form the nozzles.
4. Please don't raise the cartridge higher than 25mm above the ink or air gets into the cartridge.
5. Please don't squeeze or shake the cartridge.

T-MARKO

Sojet

Elfin High Resolution Inkjet Printer

T-Mark, a Division of Timbermark Identification Systems Limited

**Address: Unit 1 Hall Farm Workshops, Mill Lane, South Moreton,
Oxfordshire, OX11 9FD, United Kingdom**

TEL: +44 (0)870 803 1877

E-mail: sales@t-mark.co.uk

WEB: www.t-mark.co.uk